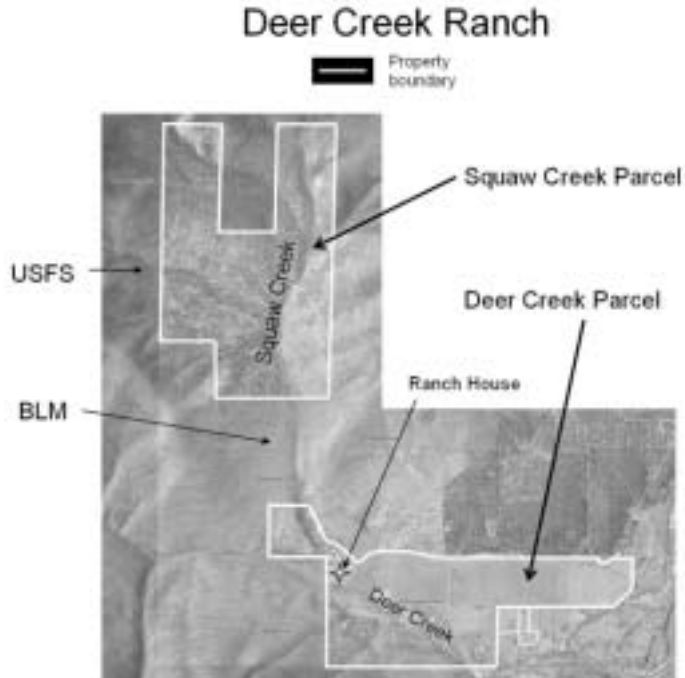


Additional Information on Vegetation and Rare Plants

Deer Creek Ranch

Deer Creek Ranch was surveyed for plant communities of concern during December of 2005 by Dr. Erik Jules (Humboldt State University). The maps below should be considered preliminary given the time of year the survey was done and limited access to the land.

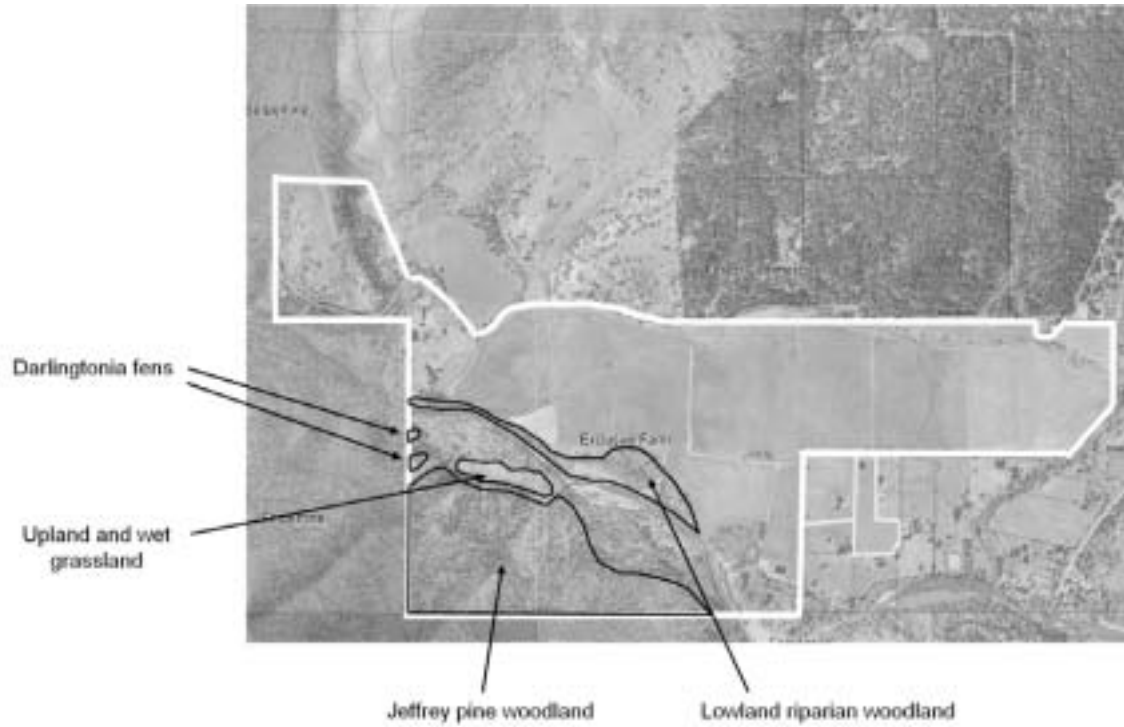
Deer Creek Ranch contains two separate parcels: Deer Creek and Squaw Creek parcels. Both are shown below with white boundaries. Subsequent maps show details of each parcel.



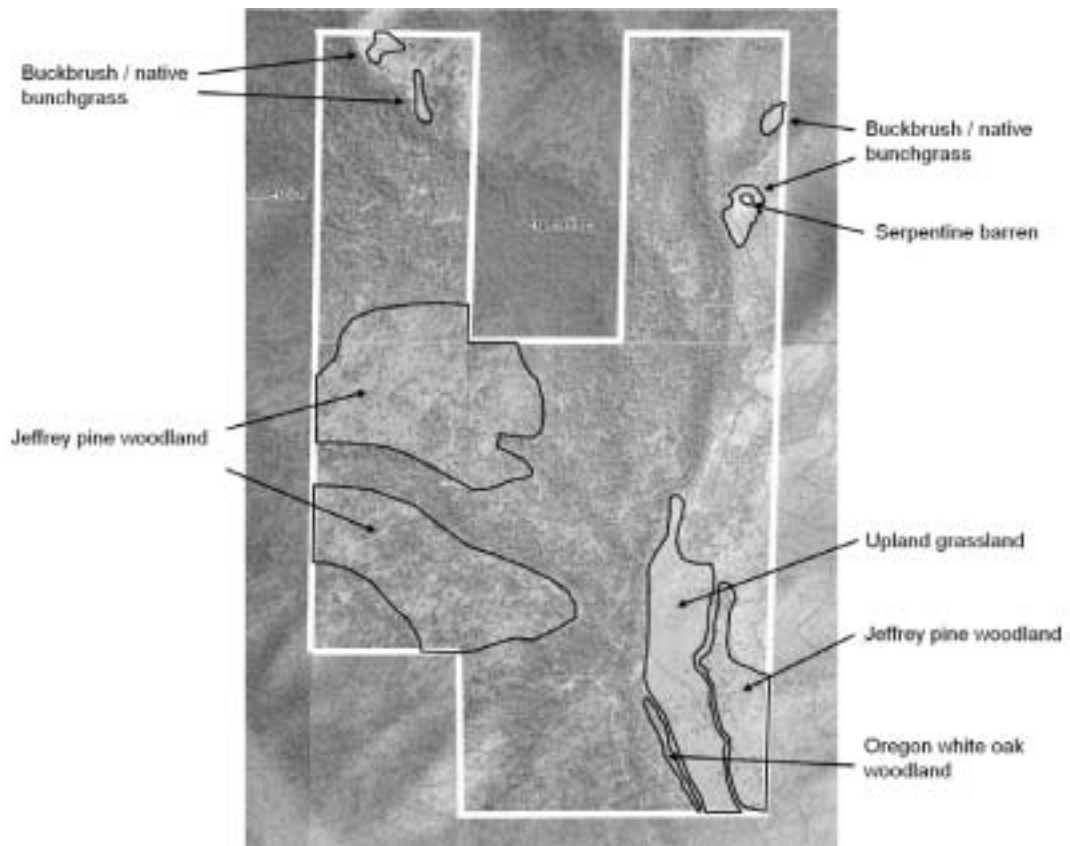
Plant communities (Ecological Cells) of interest: labeled on maps, subsequent pages.

1. Jeffrey pine woodland is comprised of two types:
 - € Jeffrey pine with incense cedar and dry shrubs.
 - € Jeffrey pine grassland savannah.
2. Buckbrush / native bunchgrass
3. Serpentine barren
4. Darlingtonia fen
5. Other possible communities on the site that were not found in the cursory survey:
 - € White oak – Douglas fir/poison oak
 - € White oak / Idaho (Roemers) fescue
 - € White oak / buckbrush / Idaho (Roemers) fescue
 - € Douglas-fir – California black oak/poison oak
 - € California oatgrass – Roemer fescue
 - € Lowland riparian woodland (priority ecological system)

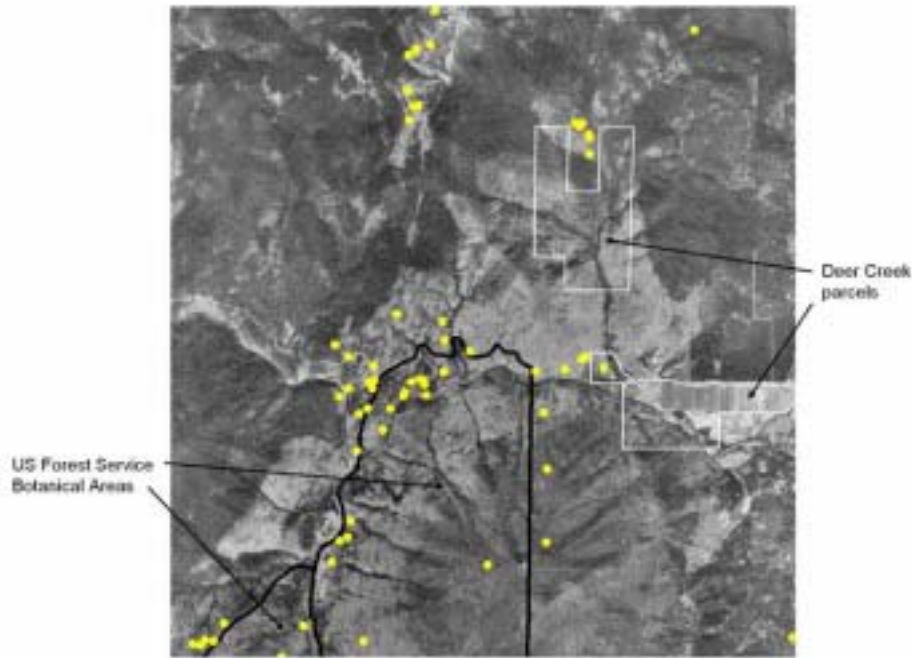
Priority vegetation on the Deer Creek Parcel



Priority vegetation on the Squaw Creek Parcel



Rare Plant Occurrence



● = rare plant occurrence

The map above shows the known occurrences of sensitive plants on **US Forest Service** lands near the Deer Creek parcels. The map does not show occurrences on Deer Creek Ranch, because it has not yet been surveyed. However, the map demonstrates the high likelihood of rare plants on the Ranch. Four of these are listed as Special Species by the Oregon Natural Heritage Plan (*).

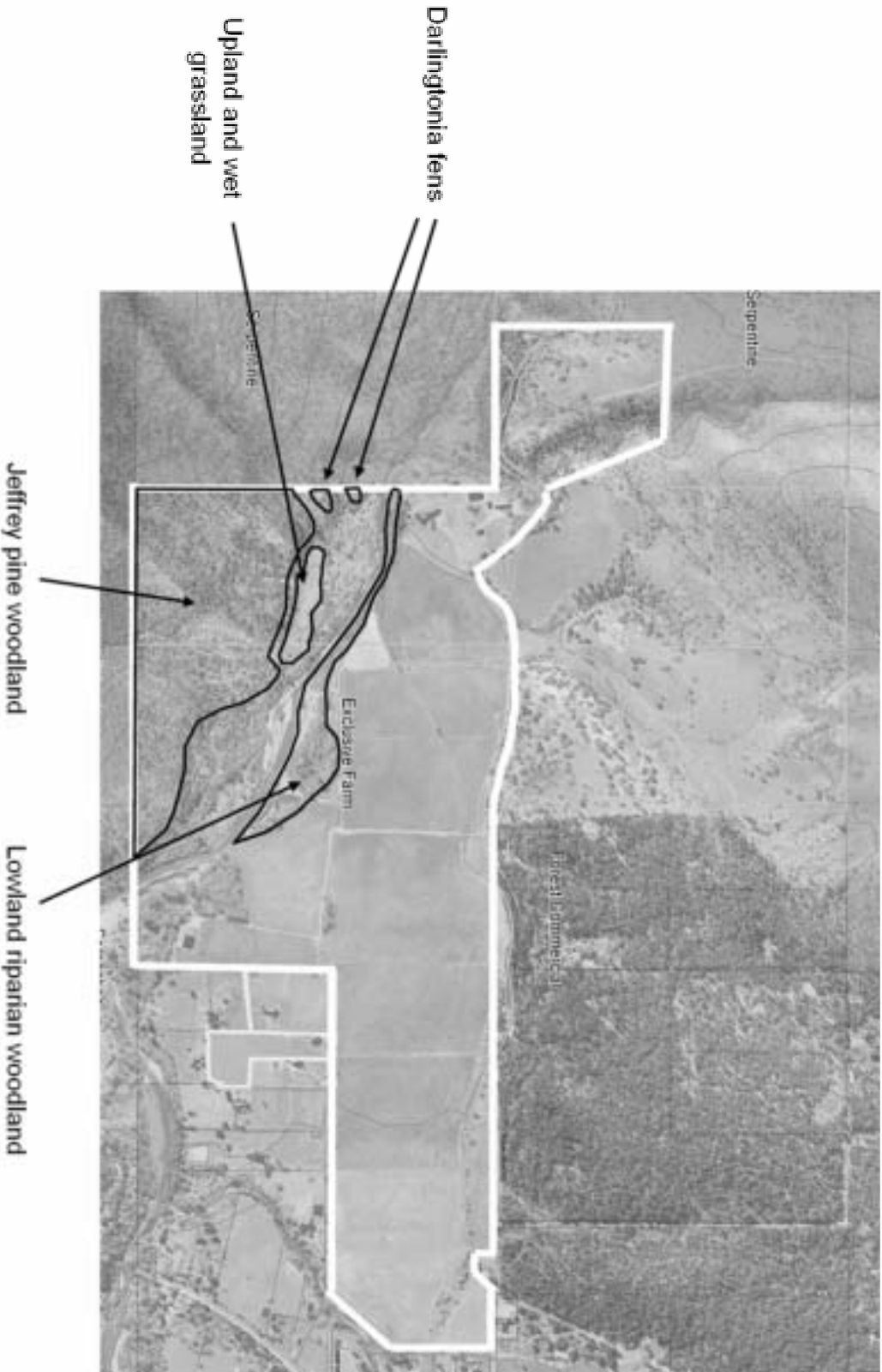
The list of rare plant near Deer Creek Ranch include, among others:

Lewisia oppositifolia
**Microseris howellii*
Arabis aculeota
**Calochortus howellii*
**Hastingia bracteosa*
**Lomatium cookii*
Pakera hesperia

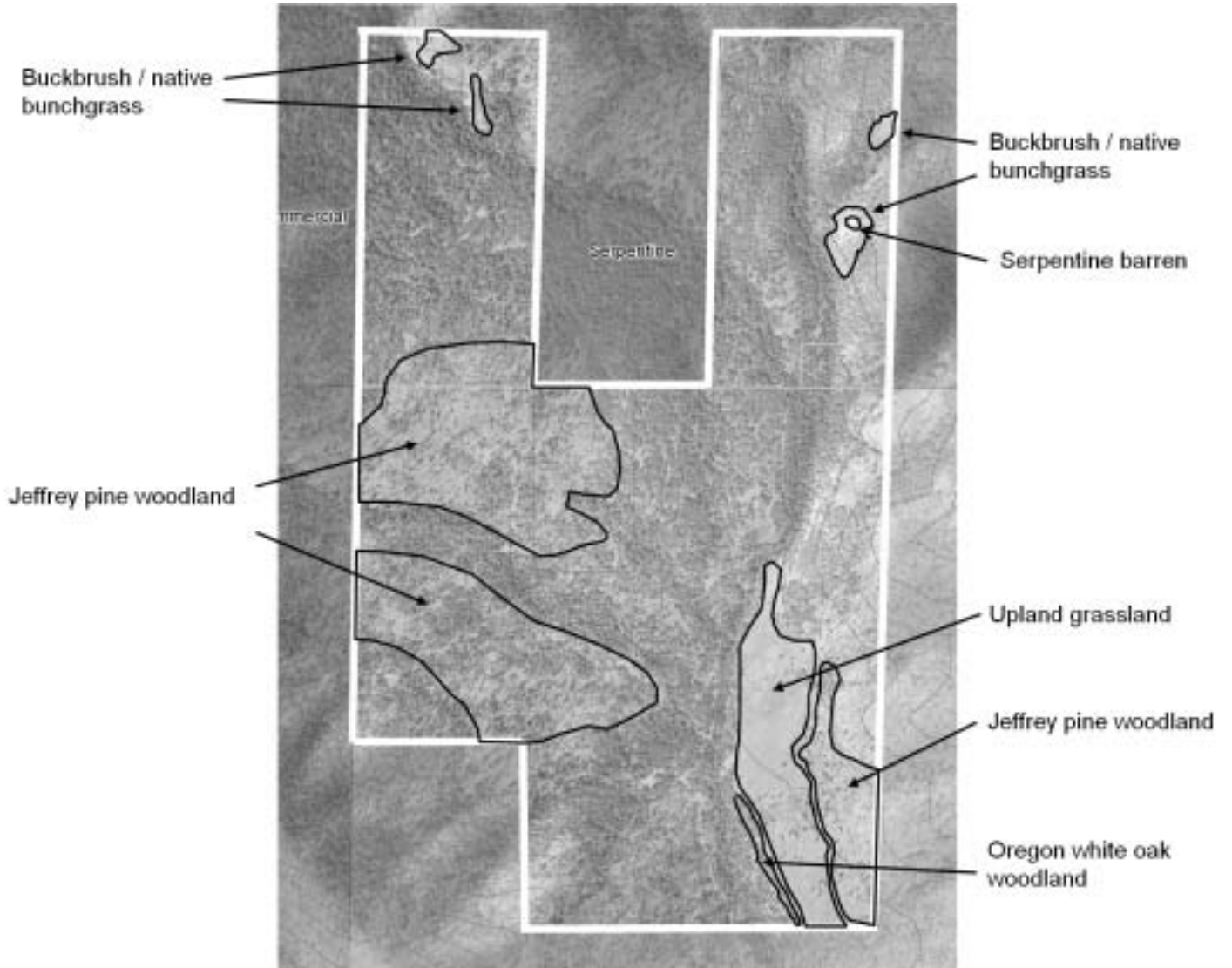
* = Special Species defined by the Oregon Natural Heritage Plan.

The area near Eight Dollar Mountain is known for its exceptionally high plant diversity. Botanical Areas shown on the map include Eight Dollar Mountain Botanical Area and Days Gulch Botanical Area. The large *Darlingtonia* (cobra lily) fen on the ranch is most likely home to a several rare plant species: *Hastingia bracteosa*, *Castellaja miniata* var. *elata*, *Gentiana setigera*, *Nartheicum claifornicum* and *Lilium pardilinum* var. *vollmeri*. Further surveys will be conducted during the flowering season. Several of these species, and a few additional ones, that live in *Darlingtonia* fens have been the subject of a recent Conservation Agreement between USFS, BLM, and USFWS.

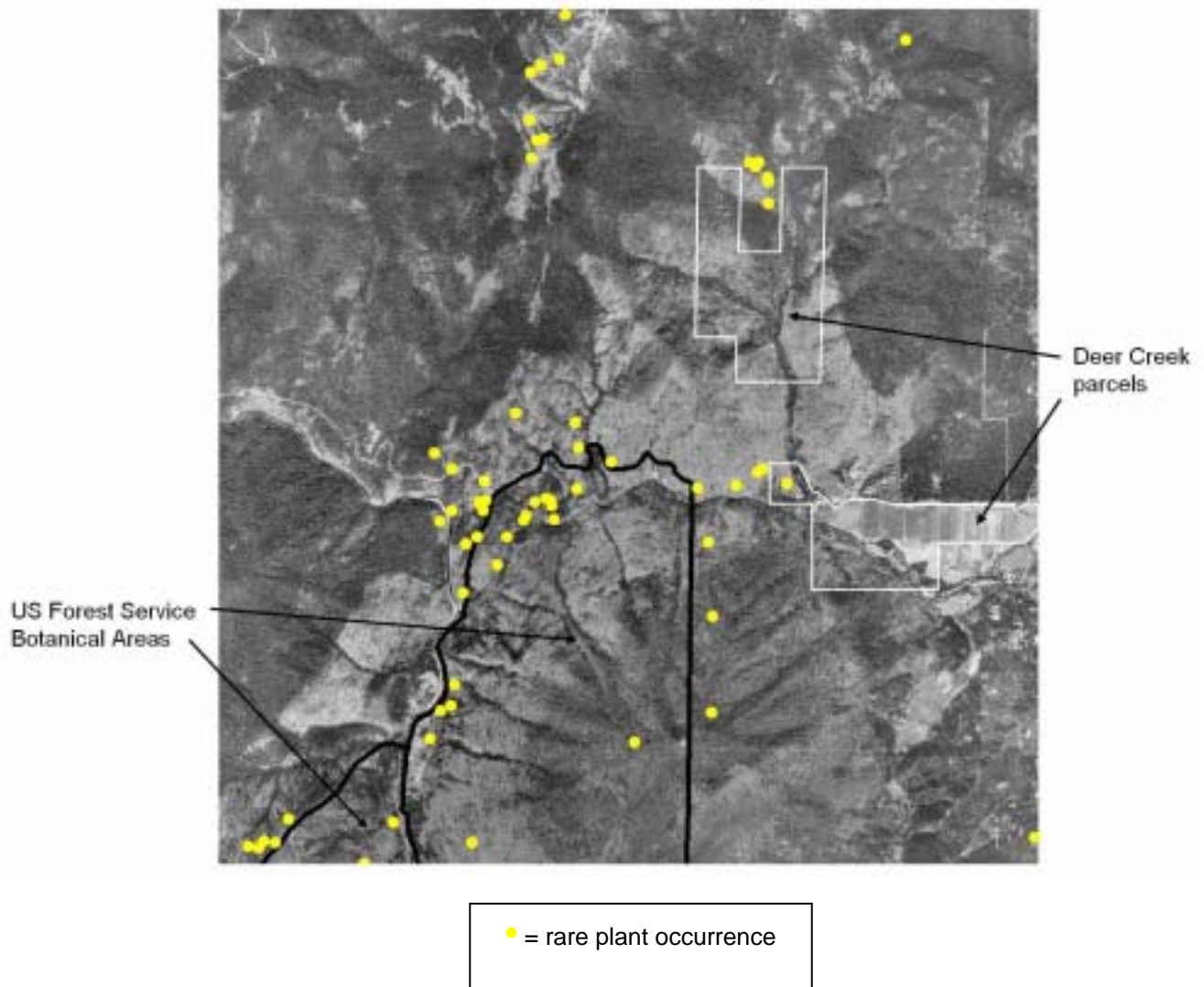
Priority vegetation on the Deer Creek Parcel (enlarged)



Priority vegetation on the Squaw Creek Parcel (enlarged)



Rare Plant Occurrence (enlarged)



The map above shows the known occurrences of sensitive plants on **US Forest Service** lands near the Deer Creek parcels. The map does not show occurrences on Deer Creek Ranch, because it has not yet been surveyed. However, the map demonstrates the high likelihood of rare plants on the Ranch. Four of these are listed as Special Species by the Oregon Natural Heritage Plan (*).